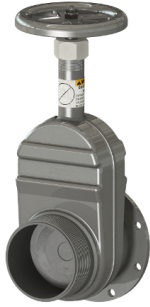




4" Manual Gate Valve - TTMA Flange x 4" Threaded Pipe



The Betts gate valve is an economical manually operated external stop valve that offers a double action hand wheel for efficient closure. The standard 316 stainless discs offer premium corrosion resistance and the adjustable packing nut with woven PTFE infused packing allows for easy stem adjustments. The metal-to-metal seal has advantages for many applications, but is susceptible to wear and scratches. If a maintainable seal valve is required, please see Betts line of replaceable o-ring seat gate valves (See Section 18 Page 3A of Parts List).

| Assembly Description Number | Body Material | Stem Material | Wt. lb. [kg] | Fl. OD | Fl. BC | Fl. Holes | Dim. A | Dim. B | Dim. D | Dim. E | Dim. F |
|---|-----------------|-----------------|--------------|----------------|----------------|----------------------|-----------------|-----------------|---------------|---------------|----------------|
| AAG1004 TTMA Flange x 4" Threaded Pipe | Aluminum | Aluminum | 6.3 [2.9] | 6.62" [168 mm] | 5.88" [149 mm] | 8 - .44" [8 - 11 mm] | 14.25" [362 mm] | 13.12" [333 mm] | 2.63" [66 mm] | 3.31" [84 mm] | 6.00" [152 mm] |
| ASG1004 TTMA Flange x 4" Threaded Pipe | Aluminum | Stainless Steel | 6.9 [3.1] | 6.62" [168 mm] | 5.88" [149 mm] | 8 - .44" [8 - 11 mm] | 14.25" [362 mm] | 13.12" [333 mm] | 2.63" [66 mm] | 3.31" [84 mm] | 6.00" [152 mm] |
| G1004 TTMA Flange x 4" Threaded Pipe | Steel | Brass | 12.5 [5.7] | 7.12" [181 mm] | 5.88" [149 mm] | 8 - .44" [8 - 11 mm] | 14.25" [362 mm] | 13.12" [333 mm] | 2.63" [66 mm] | 3.31" [84 mm] | 6.00" [152 mm] |
| FG1004 TTMA Flange x 4" Threaded Pipe | Steel | Steel | 12.3 [5.6] | 7.12" [181 mm] | 5.88" [149 mm] | 8 - .44" [8 - 11 mm] | 14.25" [362 mm] | 13.12" [333 mm] | 2.63" [66 mm] | 3.31" [84 mm] | 6.00" [152 mm] |
| SSG1004 TTMA Flange x 4" Threaded Pipe | Stainless Steel | Stainless Steel | 12.3 [5.6] | 7.12" [181 mm] | 5.88" [149 mm] | 8 - .44" [8 - 11 mm] | 14.25" [362 mm] | 13.12" [333 mm] | 2.63" [66 mm] | 3.31" [84 mm] | 6.00" [152 mm] |

Flange bolt pattern per TTMA recommendations and grooved outlets per MIL-C-10387B.

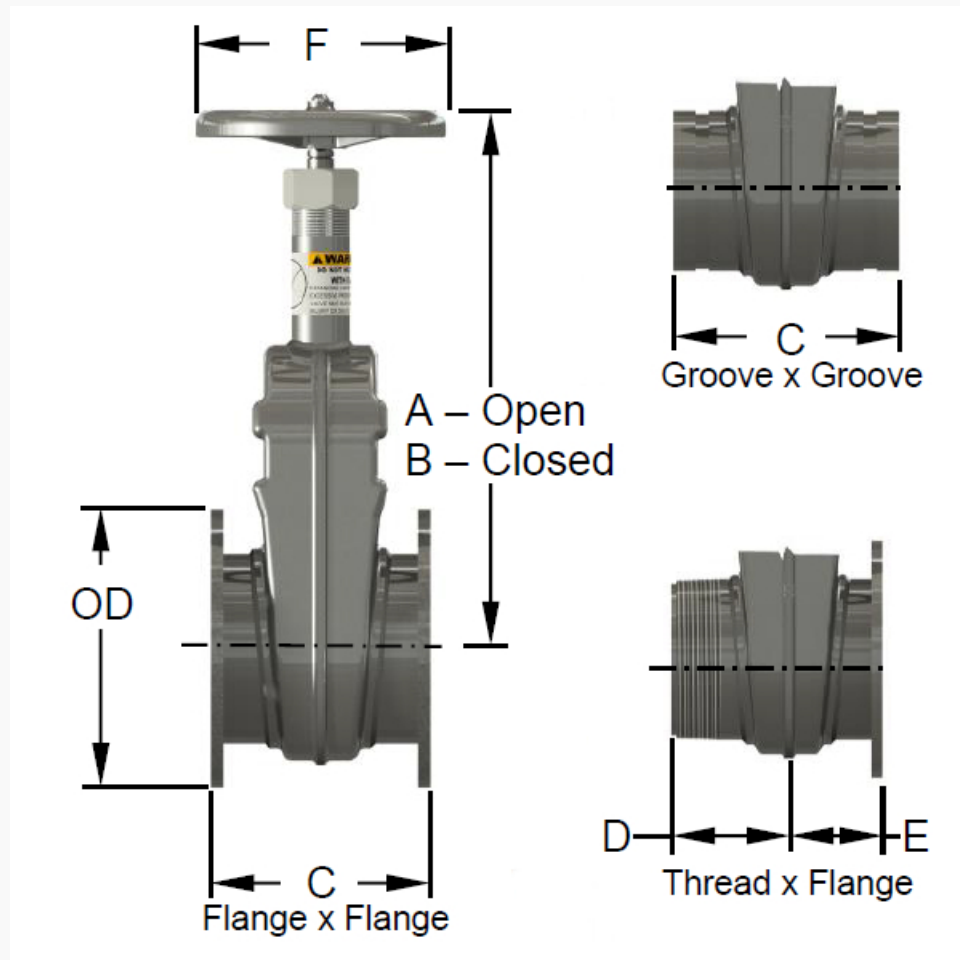
* Sump flange and other combinations available upon request.

** MAWP certified for new valves only. O-ring/disc damage or wear may reduce sealable MAWP.

Add suffix "J" to Part No. for heat tube version. (Heat tube MAWP = 150 psi)

| Body Material | Valve MAWP** | Min. Burst Pressure | Temp. Range |
|---------------|------------------|---------------------|---------------------------------|
| Aluminum | 50 psi [3.4 bar] | 200 psi [13.8 bar] | -40°F to 212°F [-40°C to 100°C] |
| Steel | 50 psi [3.4 bar] | 200 psi [13.8 bar] | -40°F to 500°F [-40°C to 260°C] |
| Stainless | 50 psi [3.4 bar] | 200 psi [13.8 bar] | -40°F to 500°F [-40°C to 260°C] |


NOTE: Valve should NEVER be heated with flame.



Teflon Accordion Packing

Add suffix "J" to Part No. for heat tube version. (Heat tube MAWP = 150 psi)

EB-1-15: Important Notification for Gate/Sliding Valves Used in Hot Service Application

 **WARNING:** This product can expose you to chemicals including Chromium (hexavalent compounds) which is known to the State of California to cause cancer, birth defects or other reproductive harm. For more information go to: www.P65Warnings.ca.gov. For additional information on Betts products and Proposition 65 list please see: <http://www.bettsind.com/prop-65/>